

# LOT 336 BROLGA STREET, BAIRNSDALE

## McLeod 150

- Bedrooms = 3
- Living areas = 2
- Bathrooms = 2
- Car Space = 2

Width 11.18m / Length 19.32m

Total Square Metres = 189.71m<sup>2</sup>



## What's Included?

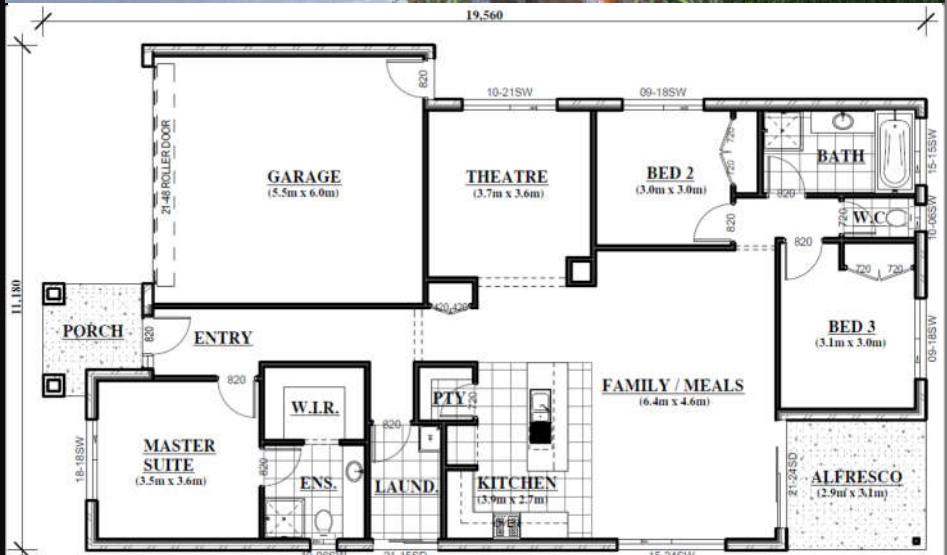
- Driveway 30m<sup>2</sup> plain concrete
- Concrete crossover 15m<sup>2</sup>
- Fully Landscaped
- Window Furnishings
- Back path to Clothesline
- Letterbox and Clothesline
- Floorcoverings
- Gas ducted heating
- 3 coat Dulux Paint system
- B&D Roller door with remote
- Reticulated Termite Treatment

### Treatment

- Flyscreens to all windows
- Solar HWS
- Colorbond Roof
- TV Antennae

....& more!

\* Ask for a full list



## TOTAL OF YOUR PACKAGE

Land Details (Lot No 336, Size 624m<sup>2</sup>):

Lot 336 Brolga

Land Price \$ 116,000.00

Colmac Design \$ 216,055.00

**TOTAL Package \$ 332,055.00**



**1300 COLMAC**

**www.colmachomes.com.au**

\* Price is based on the Standard Façade and 'New Start' Inclusions. This price is based on an 'M-Class' Slab, subject to site and soil report, 6-star energy rating, BAL and council requirements. All Photographs are for illustrative purposes only and may not represent standard specifications or inclusions. Colmac Homes reserves the right to alter the images or descriptions without notice. House and Land prices are correct at time of printing and subject to change without notice. Land prices and availability are subject to change without notice.